

Induction Street Light Series



Features : 06-008

Protection Class: IP65

Fixture body is made of high pressure die-casting aluminum

High-intensity, high temperature resistant cambered tempered glass

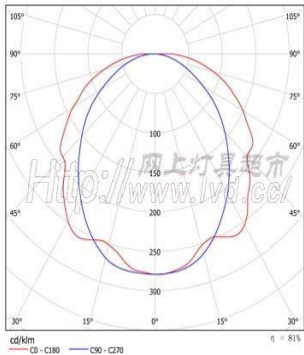
Once shaping high-purity aluminum reflector provides optimum light distribution

Electrostatic spray surface treatment technology

Optional photo-controlled switch



Photometrics



Technical details

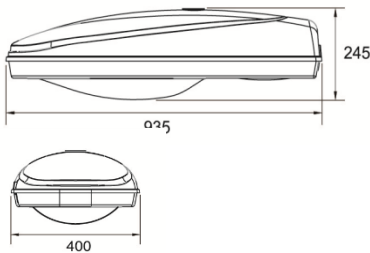
Lamp Specifications

Lamp Wattage	Luminous Flux	Pupil Lumens	CRI	Colour Temp.	Lamp life span
120 W	9600	15550	80-85	5000 k	80,000 hrs
150 W	12000	19440			
200 W	16000	25920			

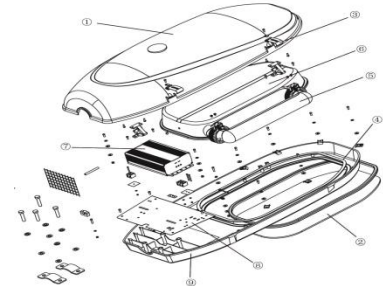
Ballast Specifications

System Wattage	Input Voltage	Input Current (amps)	THD	Ambient temp.	Power factor
120 W	110 – 277	0.59	<10%	-25 to 40 deg C	>0.98
150 W	Vac	0.74			
200 W		0.95			

Dimensions



Wattage	Dimensions
120W 150W 200W	935 x 400 x 245
Estimated Weight : 8.0 KG(fixture)	



Applications



Roads, Viaducts, Bridges, Carparks and compounds.



Ordering Information

Series					
Eco Green LVD 06-008					
	Wattage		Color Temp	Cover	Special
	120W		50-5000k	TG-Tempered Glass	
	150W	Voltage	35-3500k		
	200W	110 – 110to277V	65-6500k		
		200 – 200to240V			



Bold = Standard

Grey* = Upgrade options available upon request

Example : Eco Green LVD 06-008-200-110-50-TG

Mounting Method / Installation Procedures



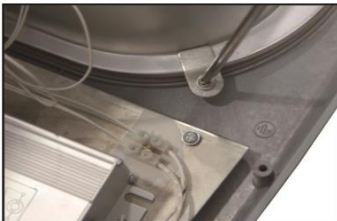
Open the buckle, flips light cover. (Note: The first flips lid flips light part of the second row of four holes with a screwdriver on the screw loose tube cable)



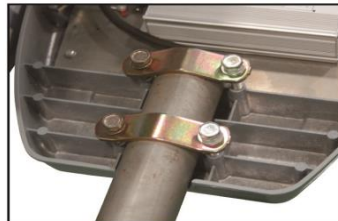
Screw with a screwdriver covered with a fixed reflector light on the pressure button screws, remove the reflector and the ring.



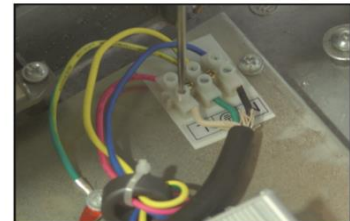
Shock pad to protect the lamp out.



Will wear a ring reflector, the back in place and to be pressed with a pressure button.



Insert the lamp pole fixed position, with a little hex wrench fixed stand-by.



Connect the power cord into the 3-row 6-hole connection terminal according to the connection label.



Pin the power cord with the pin board.



The lamp cover turn, the pressure on the pressure button



Installation is complete, turn lights, locking the four hex screws to fasten the poles. (Lamp is facing the ground)



CERT NO.: OHS-SS 506-XXXX
SS 506 : Part 1 : 2009



CERT NO.: OHS-SS 506-XXXX
SS 506 : Part 1 : 2009



CERT NO.: XX-X-XXXX
ISO 9001 : 2008



Eco Green LVD (S) Pte Ltd

Biz & GST Reg. No. 201117549C

18 Boon Lay Way #08-104 TradeHub 21 Singapore 609966

Tel: 6795 2168 Fax: 6795 6361

Videos: www.youtube.com/EcoGreenLVD

Website: www.ecogreenlvd.com