

Induction Flood Light Series



Features : 0525

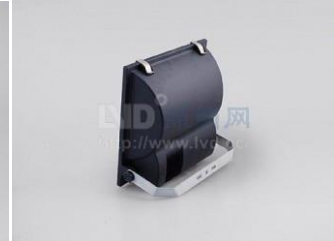
Protection Class: IP65

High pressure die-casting aluminium cover, corrosion-resistant and durable

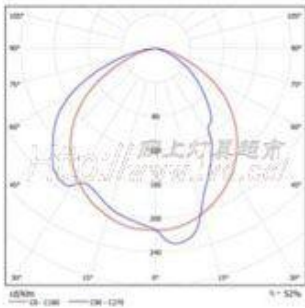
Electrostatic spray surface

Imported mirror surface aluminium reflector

Excellent reflection effect and optical properties



Photometrics



Technical details

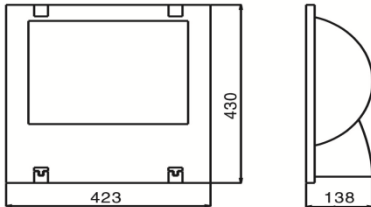
Lamp Specifications

Lamp Wattage	Luminous Flux	Pupil Lumens	CRI	Colour Temp.	Lamp life span
80 W	6400	10368	80-85	5000 k	80,000 hrs
120 W	9600	15550			
150 W	12000	19440			

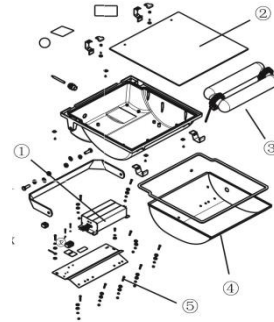
Ballast Specifications

System Wattage	Input Voltage	Input Current (amps)	THD	Ambient temp.	Power factor
80 W	110 – 277 Vac	0.4	<10%	-25 to 50 deg C	>0.98
120 W		0.59			
150 W		0.74			

Dimensions



Wattage	Dimensions
80W	423 x 430 x 138
120W	
150W	
Estimated Weight : 4 KG	



Applications



Building floodlighting, Building landscape, Parking Billboards Stadium, indoor and outdoor environments



CERT NO.: OHS-SS 506-XXXX
SS 506 : Part 1 : 2009



CERT NO.: OHS-XXXX-XXXX
SS OHSAS 18001 : 2007



CERT NO.: XX-X-XXXX
ISO 9001 : 2008



Eco Green LVD (S) Pte Ltd

Biz & GST Reg. No. 201117549C

18 Boon Lay Way #08-104 TradeHub 21 Singapore 609966

Tel: 6795 2168 Fax: 6795 6361

Videos: www.youtube.com/EcoGreenLVD

Website: www.ecogreenlvd.com

Ordering Information

Series

Eco Green LVD 0525					
	Wattage	Voltage	Color Temp	Cover	Special
	80W 120W 150W	110 – 110to277V 200 – 200to240V	50-5000k 35-3500k 65-6500k	TG-Tempered Glass PC-Polycarbonate Clear	



Bold = Standard

Grey* = Upgrade options available upon request

Example : Eco Green LVD 0525-150-110-50-TG

Mounting Method / Installation Procedures



Pull up the pressing buckles, and turn over the glass faceplate.



Unscrew the plate for fixing ballast, and take out the plate and the reflector.



Install the lamp source into the reflector (first let the terminal of the lamp go through the protective ring of the reflector from behind). Position right the holes of upper bracket, reflector and the plate and fix them tightly.



Screw the ballast on the plate, connect ballast's input terminal to the terminal of 3-group and 6-holes, and connect to the bulb's terminal.



Put the ballast in the shell and fix them tightly. Screw them.



Connect the power wire to the terminal of 3-group and 6-holes, and cover with the glass faceplate. Press down the buckle on both sides. Remove the hexagon head bolt of the fixture and put the bracket and then tighten them.